

Northbrook Cemetery Management Plan - March 2024



Northbrook cemetery is a non-active cemetery of 0.765 ha located beside the railway line in Swanage and is owned and managed by Swanage Town Council. The cemetery boundary comprises Purbeck Stone gate piers and walls and a letter dated 5th April 1885 shows an agreement made between the Burial Board and Timothy Farwell builder for the erection of the boundary wall. Records show that the two sets of iron gates on the eastern boundary weighing approximately 1.250 tonnes were removed from the cemetery and donated to the war effort by Swanage Urban District Council in 1942. An image of one set of the gates can be seen in the picture of Northbrook Lane c.1895 – Lock Coll as shown in Appendix A. The first burial took place in January 1856 and the cemetery was closed in 1936. This is with the exception of burials in pre-purchased plots.

Appendix B shows an Ordnance Survey Map of the cemetery dated 1888-1913.

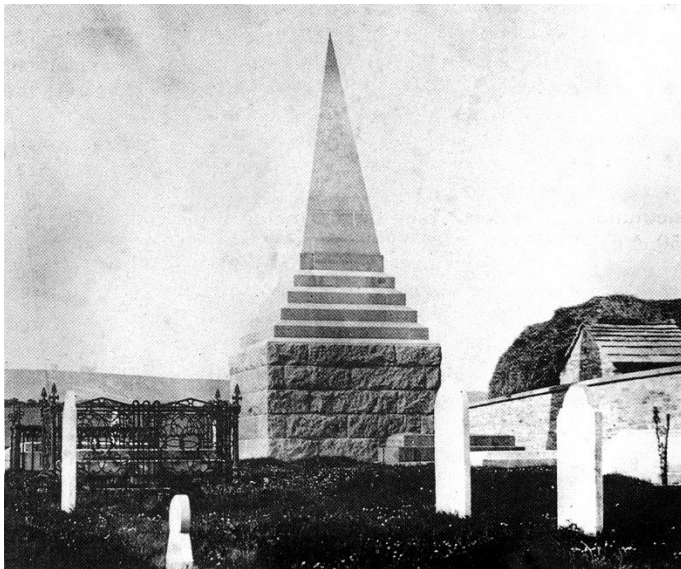
The Dorset History Centre holds a Register of Graves within the cemetery along with Minute books, Account Ledgers, Title Deeds and Swanage Burial Board Administration documents from 1854-1983. [Northbrook Cemetery Registers of Graves. \(dorsetcouncil.gov.uk\)](http://dorsetcouncil.gov.uk)

The cemetery contains 29 Commonwealth War Graves. The Imperial War Museum holds a record of those interred in Commonwealth War Graves within the cemetery in World War I [Community: Swanage \(Northbrook\) Cemetery | Lives of the First World War \(iwm.org.uk\)](http://iwm.org.uk) Ernest Herbert Pitcher 1887-1946 is interred within the cemetery. On 8th August 1917 he was wounded in action and awarded

the Victoria Cross. The following particulars are given in the London Gazette of 30th October, 1917 : "P.O. Pitcher was selected by the crew of a gun of one of H.M. Ships to receive the Victoria Cross under Rule 13 of the Royal Warrant dated 29th January, 1856." The action fought by this ship has been described as the greatest action of any "Q" boat against a submarine, fought by a ship's company of heroes."

The cemetery has separate sections for consecrated and unconcentrated graves. Extensive data and photographs of Northbrook Cemetery including the Northbrook Cemetery Burial Index 1856-2008, cemetery plans and transcriptions of memorial dedications can be found at [Swanage OPC \(opcdorset.org\)](http://opcdorset.org)

John Mowlem (1788-1868) is interred within the cemetery within a Grade II listed spire vault. The stone came from Guernsey, and this granite pyramid was erected by "H Bissel, Vale, Guernsey". The plinth is in Purbeck stone. Images below show an early picture (date unknown) of the Mowlem Vault and a current image.



There are four access points to the cemetery comprising two stone gates piers and two metal gates. The two stone piers are linked with two tarmac paths, one running along the southeast wall and one running through the middle of the cemetery. Access to the cemetery through the metal gates can be made on grass paths.

Ecological Surveys

Northbrook cemetery is an important site for wildlife. A past survey (date unknown) recorded 5 types of ferns, 22 types of grasses and sedges, 18 types of trees and 94 herbaceous plants (see Appendix C). The cemetery provides a habitat for many species of butterfly, birds, and slow worms.

Management Plan

Northbrook cemetery is managed to support wildlife. The grasses and plants are allowed to grow during spring and summer and are then cut and collected in late autumn. Ant hills are levelled but only those that can cause damage to graves or present a trip hazard. Brambles and self-seeded trees are removed to maintain the appearance of the cemetery. Ivy is routinely removed from perimeter walls to prevent damage to the stonework.

Commonwealth War Graves and the grass paths that connect them to the main path are regularly cut and maintained in accordance with the Commonwealth War Graves Commission specification for maintenance.

The area is inspected regularly, litter picked, and monument testing is undertaken as per programme (minimum once every five years).

Trees

All tree stock is managed in accordance with the Council's Tree Policy, adopted 2022. Species include ash, lime, evergreen oak, yew, and Corsican pine. The Monterey Cypress (*cypressus macrocarpa*) within the cemetery stands as the largest tree with a height of approximately 20metres. It is estimated to be around 150 years old.

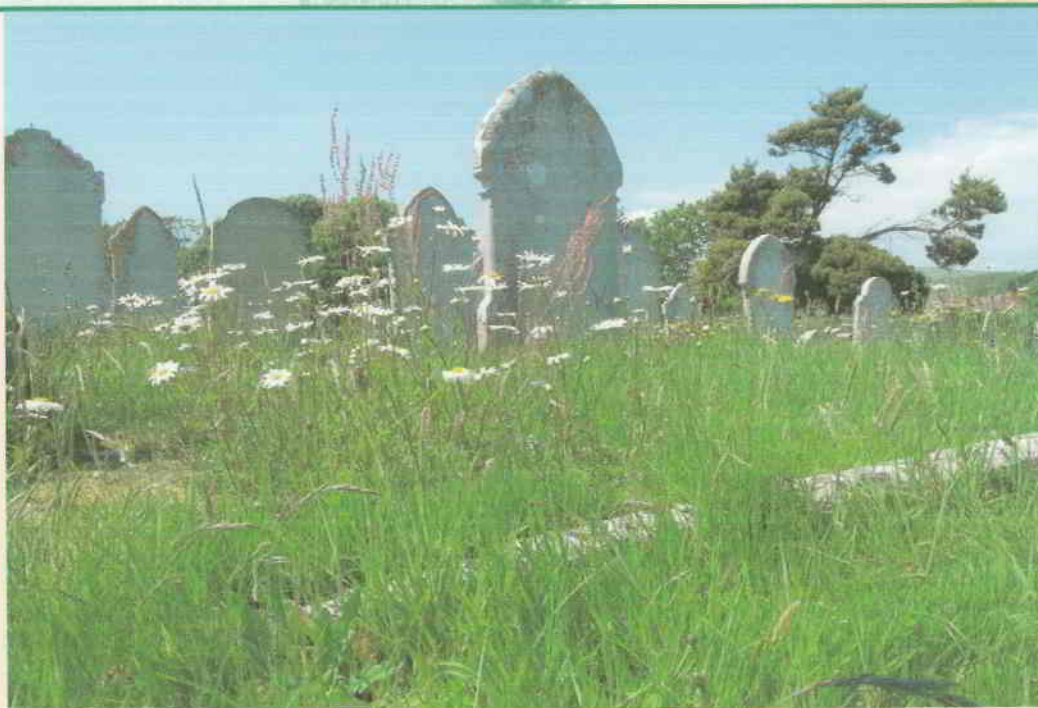
The yew trees within the cemetery include two impressive sized trees Irish yews, thought to be a mutant form derived from the familiar common yew. This species was first discovered in Ireland in 18th century.

APPENDIX A : Northbrook Lane, c.1895



APPENDIX B : Northbrook Cemetery OS Map 1888-1913





Northbrook Cemetery
Swanage
Plant list

NORTHBROOK CEMETERY:

PLANT SPECIES LIST:

Grasses/ Sedges/ Ferns:

Common name:

Scientific name:

Ferns:

Bracken
Rustyback
Maidenhair Spleenwort
Wall Rue
Intermediate Polypody

Pteridium aquilinum
Ceterach officinarium
Asplenium trichomanes
A. ruta-muraria
Polypodium interjectum

Grasses & Sedges:

Sweet Vernal-grass
Annual Meadow-grass
Rough Meadow-grass
Smooth Meadow-grass
Common Couch
Cocksfoot
Tor-grass
Sheep's Fescue
Red Fescue
Wall Barley
Barren Brome
Soft-brome
False Oat-grass
Yellow Oat-grass
Perennial Rye-grass
Common Bent
Yorkshire-fog
Glaucous Sedge
Leers' Sedge
Field Wood-rush
Fern-grass
Downy Oat-grass

Anthoxanthum odoratum
Poa annua
P. trivialis
P. pratensis
Elymus repens
Dactylis glomerata
Brachypodium pinnatum
Festuca ovina
F. rubra
Hordeum murinum
Anisantha sterilis
Bromus hordeaceus
Arrhenatherum elatius
Trisetum flavescens
Lolium perenne
Agrostis capillaries
Holcus lanatus
Carex flacca
C. divulsa subsp. Leersii
Luzula campestris
Catapodium rigidum
Helicototrichon pubescens

Trees and Shrubs:

Bay Laurel
Yew
Golden Yew
English Elm
Elder
Holly
Japanese Euonymus

Laurus nobilis
Taxus baccata
T. baccata 'Elegantissima'
Ulmus procera
Sambucus nigra
Ilex aquifolium
Euonymus japonicus

Sycamore
Ash
Lilac
Monterey Cypress
Holm Oak
Privet
Large Leaved Lime
Monterey Pine
Wild Cherry
Wall Cotoneaster
Hawthorn

Acer pseudoplatanus
Fraxinus excelsior
Syringa vulgaris
Cupressus macrocarpa
Quercus ilex
Ligustrum vulgare
Tilia platyphyllos
Pinus radiata
Prunus avium
Cotoneaster horizontalis
Crataegus monogyna

Herbaceous plants:

Smooth Hawks'-beard
Rough Hawks'-beard
Nipplewort
Ox-eye Daisy
Daisy
Dandelion spp
Smooth Sow-thistle
Prickly Sow-thistle
Yarrow
Lesser Hawkbit
Rough Hawkbit
Common Ragwort
Bristly Oxtongue
Spear Thistle
Cat's-ear
Tutsan
Ivy
Bramble spp
Wood Avens
Creeping Cinquefoil
Barren Strawberry
Keel-fruited Cornsalad
Red Valerian
Ivy-leaved Toadflax
Purple Toadflax
Scarlet Pimpernel
Primrose
Cyclamen
Petty Spurge
Ribwort Plantain
Black Medick
Common Restharrow
Pink-sorrel
Red Clover
Common Vetch
Common Bird's-foot-trefoil

Crepis capillaris
C. biennis
Lapsana communis
Leucanthemum vulgare
Bellis perennis
Taraxacum agg
Sonchus olerceus
S. asper
Achillea millefolium
Leontodon saxatilis
L. hispidus
Senecio jacobaea
Picris echiodes
Cirsium vulgare
Hypochaeris radicata
Hypericum androsaemum
Hedera helix
Rubus agg
Geum urbanum
Potentilla reptans
P. sterilis
Valerianella carinata
Centranthus vulgare
Cymbalaria muralis
Linaria purpurea
Anagalis arvensis
Primula vulgaris
Cyclamen hederifolium
Euphorbia peplus
Plantago lanceolata
Medicago lupulina
Ononis repens
Oxalis articulata
Trifolium pratense
Vicia sativa
Lotus corniculatus

Meadow Vetchling
 Creeping Buttercup
 Bulbous Buttercup
 Lesser Celandine
 Traveller's-joy
 Ground Elder
 Hogweed
 Cow Parsley
 Corky-fruited Water-dropwort
 Garlic Mustard
 Stone Parsley
 Curled Dock
 Common Sorrel
 Broad-leaved Dock
 Lords-and-Ladies
 Early-purple Orchid
 Pyramidal Orchid
 Cleavers
 Lady's Bedstraw
 Wall Speedwell
 Ivy-leaved-Speedwell
 Common Field Speedwell
 Slender Speedwell
 Germander Speedwell
 Common Mouse-ear
 Sticky Mouse-ear
 Bugle
 Ground-ivy
 Betony
 Field Bindweed
 Common Mallow
 Bittersweet
 Herb-Robert
 Small-flowered Cranes-bill
 Cut-leaved Crane's-bill
 Dove's-foot Crane's-bill
 Wild Onion
 Three-cornered Garlic
 White Stonecrop
 Thale Cress
 Hairy Bitter-cress
 Red Dead-nettle
 Hybrid Bluebell
 Daffodil
 Sweet Violet
 Snowdrop
 Large-flowered Evening-primrose
 Annual Pearlwort

Lathyrus pratensis
Ranunculus repens
R. bulbosus
R. ficaria
Clematis vitalba
Aegopodium podagari
Heracleum sphondylium
Anthriscus sylvestris
Oenanthe pimpinelloides
Alliaria petiolata
Sison amomum
Rumex crispus
R. acetosa
R. obtusifolius
Arum maculatum
Orchis mascula
Anacamptis pyramidalis
Gallium aparine
G. verum
Veronica arvensis
V. hederifolia
V. persica
V. filiformis
V. chamaedrys
Cerastium fontanum
C. glomeratum
Ajuga reptans
Glechoma hederacea
Stachys officinalis
Convolvulus arvensis
Malva sylvestris
Solanum dulcamara
Geranium robertianum
G. pusillum
G. dissectum
G. molle
Allium vineale
A. triquetrum
Sedum album
Arabidopsis thaliana
Cardamine hirsuta
Lamium purpureum
Hyacinthoides x massartiana
Narcissus cv
Viola odorata
Galanthus nivalis
Oenothera glazoviana
Sagina apetala

Procumbent Pearlwort

S. procumbens